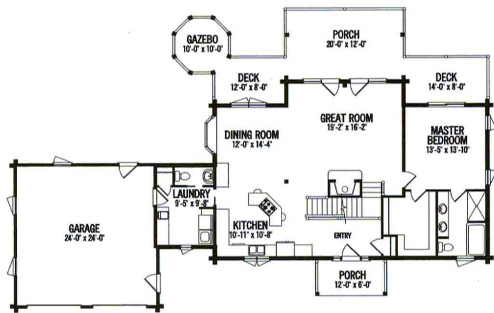


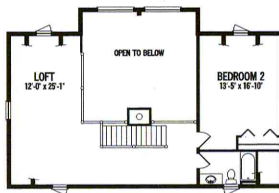
The MOUNTAIN VIEW

Outdoor living is easy on the rear porch and gazebo of the Mountain View. This plan also offers comfortable interior spaces, including a large great room with central fireplace, master suite and versatile open loft. Retire to the lower level and enjoy wide-open spaces for recreation and entertainment.

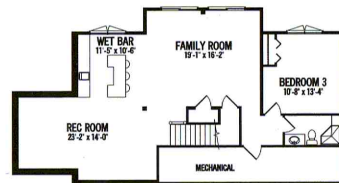
Rooms:	Square Footage:
3 Bedrooms	1,416 First Floor
3.5 Baths	839 Second Floor
	1,155 Lower Level
	3,410 Total



FIRST FLOOR



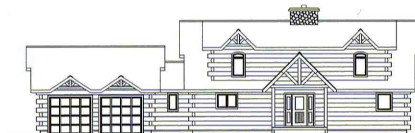
SECOND FLOOR



LOWER LEVEL



LEFT ELEVATION



FRONT ELEVATION



STRONGWOOD
LOG HOME
COMPANY

© 2008 Strongwood Log Home Company.