

The GLACIER BAY

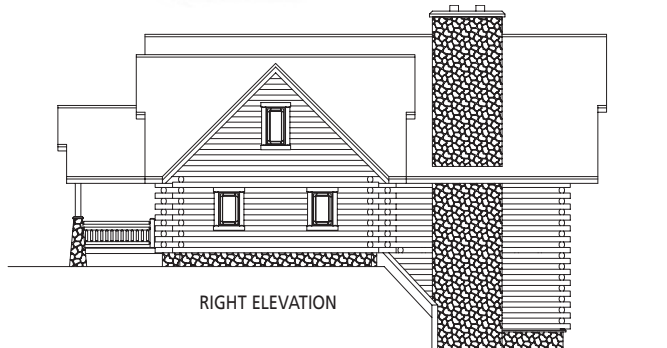
As inspiring as its name implies, the Glacier Bay provides such amenities as octagonal stairs, a bridge spanning the second floor, and artful oversized windows to capture natural light. Stairs from both the living room and the garage lead to a massive lower-level family room, affording informal space to relax and unwind.

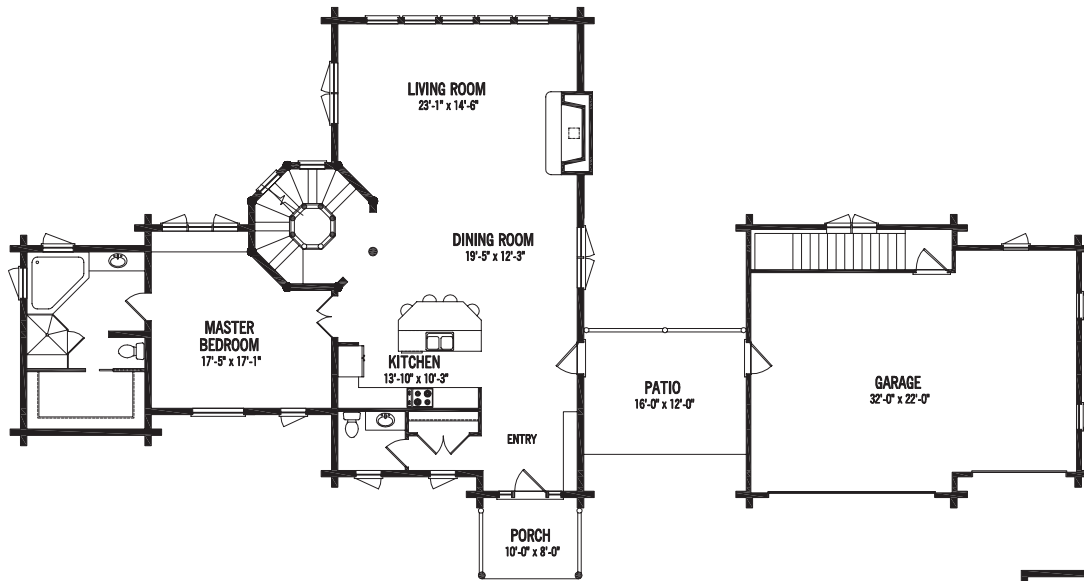
Rooms:

3 Bedrooms
2 Baths
2 Half-Baths

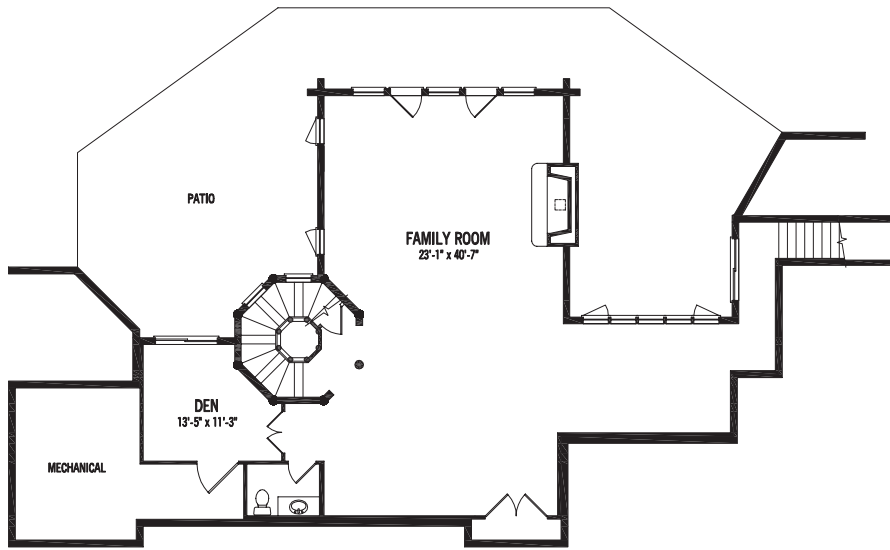
Square Footage:

1,658 First Floor
1,030 Second Floor
1,577 Walkout
4,265 Total

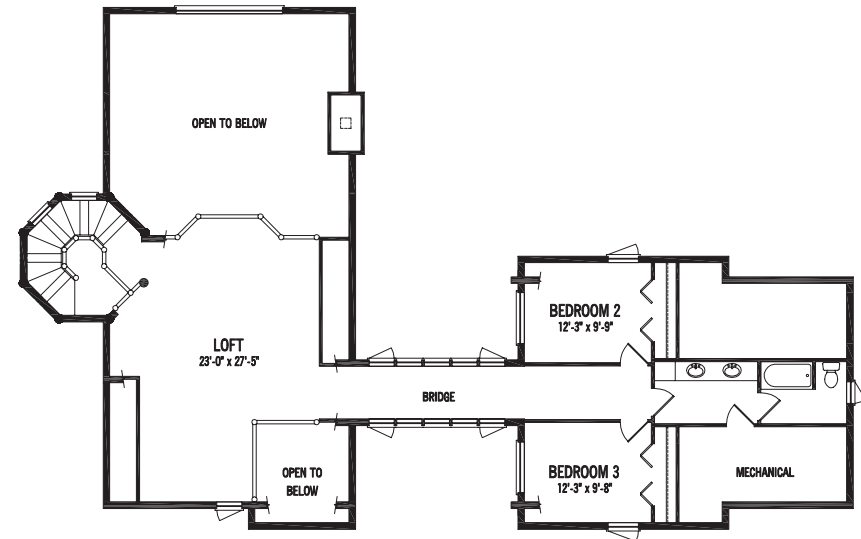




FIRST FLOOR



LOWER LEVEL



SECOND FLOOR



STRONGWOOD
LOG HOME
COMPANY